

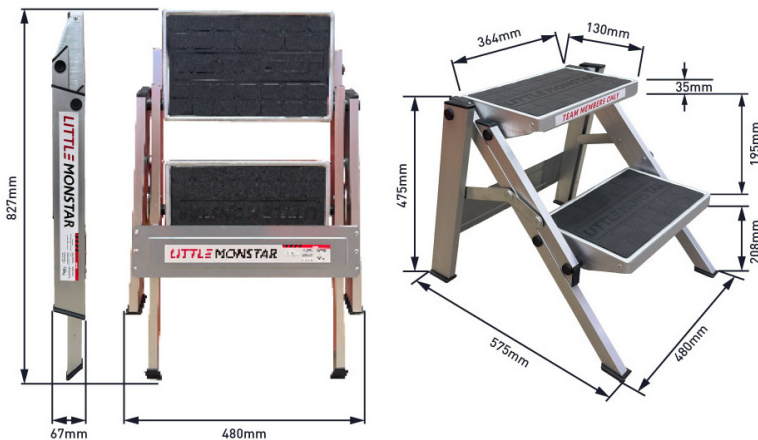


2 Step Camping Step Ladders

150kg - Compact Foldable Design - Step Stool

FEATURING

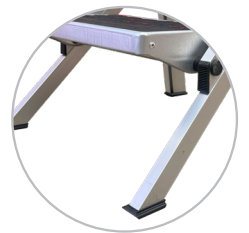
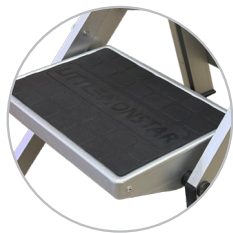
- Weather-Resistant Durability, Built for the Outdoors**
 Crafted from high-quality materials designed to withstand outdoor conditions, ensuring long-lasting performance.
- Secure Two-Step Design with Anti-Slip Surface**
 Provides stable, reliable access to elevated areas such as RVs, trucks, or trailers. Each step features a textured surface that enhances grip and reduces the risk of slipping, even in wet or uneven terrain.
- Compact and Foldable**
 Easily folds down for space-saving storage, making it perfect for camping, travel, or everyday use where portability matters.
- Lightweight and Portable**
 Engineered for easy handling and transport, allowing quick setup and pack-down wherever you need it.
- Manufacturer's Warranty Included**
 Comes with warranty coverage for defects in materials or workmanship, giving you added confidence with every use.



Dimensions may vary slightly ($\pm 3-5$ mm) within acceptable manufacturing tolerances.

TECHNICAL PROPERTIES

SKU	MONLM2C
Step(s)	2 Steps
Load Capacity (kg)	150kg
Step Size (mm)	364(L) x 130(W) x 35(H)mm
Folded Size (mm)	480(L) x 67(W) x 827(H)mm
Opened Size (mm)	480(L) x 575(W) x 475(H)mm
Footprint Size (mm)	480(L) x 575(W)mm
Weight	5kg



Melbourne Head Office
P: (03) 8791 5777
E: melbourne@teamsystems.net.au

Adelaide Branch
P: (08) 8340 4111
E: adelaide@teamsystems.net.au

Sydney Branch
P: (02) 9609 7782
E: sydney@teamsystems.net.au

Perth Branch
P: (08) 9455 4855
E: perth@teamsystems.net.au

Brisbane Branch
P: (07) 3807 9144
E: brisbane@teamsystems.net.au

