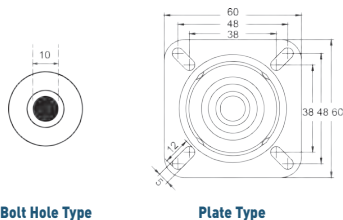


# **CASTORS & WHEELS**



TeamStar Castors .....	40-44
iROLL Castors & Wheels .....	45-46
Fallshaw Castors & Wheels.....	46-47
Castor Accessories .....	48



Bolt Hole Type

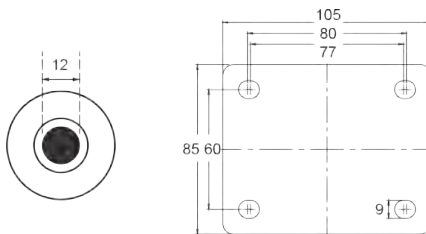
Plate Type



## General Duty/Light Grey Rubber 50 - 75kg Capacity

- > Double ball race headset for smooth swivel action
- > Durable pressed metal frame with zinc plating for corrosion resistance
- > Reinforced axle sleeve enhances wheel strength and durability
- > TPP rubber wheel suitable for a wide range of surfaces

50 - 75KG CAPACITY		BOLT HOLE - 10MM		MOUNTING PLATE		
Wheel Dia.	Overall Height	SKU - Bolt Hole	SKU - Bolt Hole with Brake	SKU - Swivel	SKU - Swivel with Brake	SKU - Fixed Rigid
50mm (50kg)	69mm	TE11TPP050H	TE11TPP050HB	TE11TPP050S	TE11TPP050SB	TE11TPP050R
75mm (70kg)	100mm	TE11TPP075H	TE11TPP075HB	TE11TPP075S	TE11TPP075SB	TE11TPP075R
100mm (75kg)	125mm	TE11TPP100H	TE11TPP100HB	TE11TPP100S	TE11TPP100SB	TE11TPP100R



Bolt Hole Type

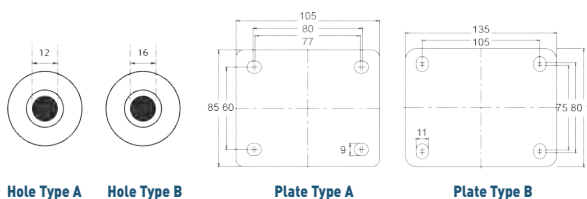
Plate Type



## Industrial Grey Rubber 150 - 190kg Capacity

- > Double ball race head set for smooth swivel action
- > Durable pressed metal frame with zinc plating for corrosion resistance
- > Fitted with precision ball bearings to ensure smooth, quiet, and reliable rolling under load
- > TPP rubber wheel suitable for a wide range of surfaces

150 - 190KG CAPACITY		BOLT HOLE - 12MM		MOUNTING PLATE		
Wheel Dia.	Overall Height	SKU - Bolt Hole	SKU - Bolt Hole with Brake	SKU - Swivel	SKU - Swivel with Brake	SKU - Fixed Rigid
80mm (140kg)	108mm	TE21TPB080H	TE21TPB080HB	TE21TPB080S	TE21TPB080SB	TE21TPB080R
100mm (150kg)	128mm	TE21TPB100H	TE21TPB100HB	TE21TPB100S	TE21TPB100SB	TE21TPB100R
125mm (190kg)	155mm	TE21TPB125H	TE21TPB125HB	TE21TPB125S	TE21TPB125SB	TE21TPB125R



Hole Type A

Hole Type B

Plate Type A

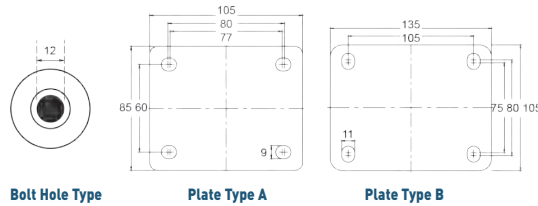
Plate Type B



## Industrial Blue Rubber 130 - 300kg Capacity

- > Double ball race head set for smooth swivel performance
- > Pressed metal frame with zinc plating for corrosion resistance
- > Fitted with durable roller bearings for reliable load handling
- > Blue elastic rubber wheel delivers quiet, smooth, and versatile performance

130 - 300KG CAPACITY		BOLT HOLE			MOUNTING PLATE			
Wheel Dia.	Overall Height	SKU - Bolt Hole	SKU - Bolt Hole with Brake	Hole Type	SKU - Swivel	SKU - Swivel with Brake	SKU - Fixed Rigid	Plate Type
80mm (130kg)	108mm	TE21ENR080H	TE21ENR080HB	A	TE21ENR080S	TE21ENR080SB	TE21ENR080R	A
100mm (140kg)	128mm	TE21ENR100H	TE21ENR100HB	A	TE21ENR100S	TE21ENR100SB	TE21ENR100R	A
125mm (180kg)	155mm	TE21ENR125H	TE21ENR125HB	A	TE21ENR125S	TE21ENR125SB	TE21ENR125R	A
160mm (300kg)	200mm	TE21ENR160H	TE21ENR160HB	A/B	TE21ENR160S	TE21ENR160SB	TE21ENR160R	B



Bolt Hole Type

Plate Type A

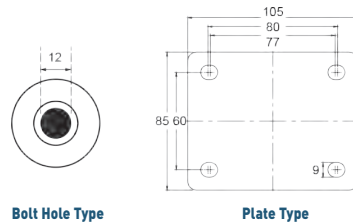
Plate Type B



## Industrial Urethane 140 - 300kg Capacity

- › Double ball race head set for smooth swivel performance
- › Pressed metal frame with zinc plating for corrosion resistance
- › Fitted with durable roller bearings for reliable load handling
- › Urethane-tread wheel on a durable nylon core for high load capacity and smooth rolling

140 - 300KG CAPACITY		BOLT HOLE - 12MM		MOUNTING PLATE			
Wheel Dia.	Overall Height	SKU - Bolt Hole	SKU - Bolt Hole with Brake	SKU - Swivel	SKU - Swivel with Brake	SKU - Fixed Rigid	Plate
80mm (140kg)	108mm	TE21UNR080H	TE21UNR080HB	TE21UNR080S	TE21UNR080SB	TE21UNR080R	A
100mm (150kg)	128mm	TE21UNR100H	TE21UNR100HB	TE21UNR100S	TE21UNR100SB	TE21UNR100R	A
125mm (190kg)	155mm	TE21UNR125H	TE21UNR125HB	TE21UNR125S	TE21UNR125SB	TE21UNR125R	A
160mm (300kg)	200mm	TE21UNR160H	-	-	-	-	B



Bolt Hole Type

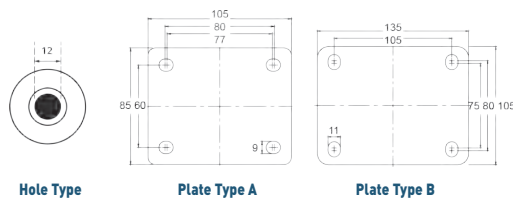
Plate Type



## Industrial White Nylon 180 - 270kg Capacity

- › Double ball race head set for smooth swivel performance
- › Pressed metal frame with zinc plating for corrosion resistance
- › Fitted with durable roller bearings for reliable load handling
- › Solid white nylon wheel for high strength, low rolling resistance, and wear resistance

180 - 270KG CAPACITY		BOLT HOLE - 12MM		MOUNTING PLATE			
Wheel Dia.	Overall Height	SKU - Bolt Hole	SKU - Bolt Hole with Brake	SKU - Swivel	SKU - Swivel with Brake	SKU - Fixed Rigid	
80mm (180kg)	108mm	TE21NNR080H	TE21NNR080HB	TE21NNR080S	TE21NNR080SB	TE21NNR080R	
100mm (190kg)	128mm	TE21NNR100H	TE21NNR100HB	TE21NNR100S	TE21NNR100SB	TE21NNR100R	
125mm (270kg)	155mm	TE21NNR125H	TE21NNR125HB	TE21NNR125S	TE21NNR125SB	TE21NNR125R	



Hole Type

Plate Type A

Plate Type B



## Medium Heavy Duty Rubber 200 - 400kg Capacity

- › Double ball race head set for smooth swivel performance
- › Pressed metal frame with zinc plating for corrosion resistance
- › Fitted with durable roller bearings for reliable load handling
- › Blue elastic rubber wheel delivers quiet, smooth, and versatile performance

200 - 400KG CAPACITY		BOLT HOLE - 12MM		MOUNTING PLATE			
Wheel Dia.	Overall Height	SKU - Bolt Hole	SKU - Bolt Hole with Brake	SKU - Swivel	SKU - Swivel with Brake	SKU - Fixed Rigid	Plate
100mm (200kg)	128mm	TE31EZB100H	TE31EZB100HB	TE31EZB100S	TE31EZB100SB	TE31EZB100R	A
125mm (250kg)	155mm	-	-	TE31EZB125S	TE31EZB125SB	TE31EZB125R	A
160mm (300kg)	200mm	-	-	TE31EZB160S	TE31EZB160SB	TE31EZB160R	B
200mm (400kg)	240mm	-	-	TE31EZB200S	TE31EZB200SB	TE31EZB200R	B

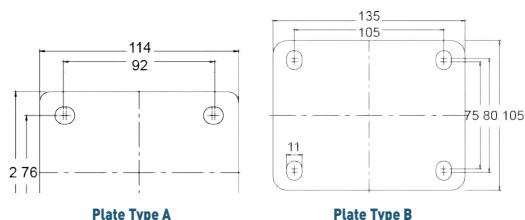


Plate Type A

Plate Type B



## Heavy Duty Urethane 250 - 400kg Capacity

- › Welded heavy-duty metal frame with double ball race head set
- › Urethane tread on nylon core for strength and smooth rolling
- › Precision bearings ensure smooth, consistent, and low-resistance rolling
- › Built for demanding industrial and material handling use

250 - 400KG CAPACITY		MOUNTING PLATE			
Wheel Dia.	Overall Height	SKU - Swivel	SKU - Swivel with Brake	SKU - Fixed Rigid	Plate Type
100mm (200kg)	143mm	TE41UPB100S	TE41UPB100SB	TE41UPB100R	A/B
125mm (250kg)	165mm	TE41UPB125S	TE41UPB125SB	TE41UPB125R	A/B
150mm (300kg)	191mm	TE41UPB150S	TE41UPB150SB	TE41UPB150R	A/B

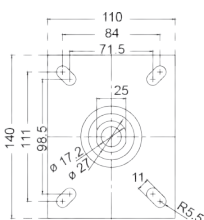


Plate Type



## Super Heavy Duty Urethane 300 - 500kg Capacity

- › Welded heavy-duty metal frame with double ball race head set
- › Urethane tread on nylon core for strength and smooth rolling
- › Precision bearings ensure smooth, consistent, and low-resistance rolling
- › Built for demanding industrial and material handling use

300 - 500KG CAPACITY		MOUNTING PLATE		
Wheel Dia.	Overall Height	SKU - Swivel	SKU - Swivel with Brake	SKU - Fixed Rigid
125mm (300kg)	173mm	TE51UNB125S	TE51UNB125SB	TE51UNB125R
160mm (400kg)	202mm	TE51UNB160S	TE51UNB160SB	TE51UNB160R
200mm (500kg)	247mm	TE51UNB200S	TE51UNB200SB	TE51UNB200R

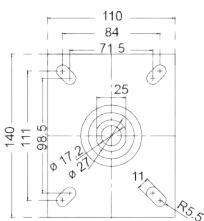


Plate Type



## Super Heavy Duty Urethane 550 - 800kg Capacity

- › Fully welded, zinc-plated metal frame for super heavy-duty performance
- › Precision bearing head set ensures smooth and controlled swivel movement
- › Urethane on cast iron wheel for strength and quiet rolling
- › Fitted with precision wheel bearings for reliable, low-friction movement

550 - 800KG CAPACITY		MOUNTING PLATE		
Wheel Dia.	Overall Height	SKU - Swivel	SKU - Swivel with Brake	SKU - Fixed Rigid
125mm (550kg)	180mm	TE51UIB125S	TE51UIB125SB	TE51UIB125R
160mm (600kg)	210mm	TE51UIB160S	TE51UIB160SB	TE51UIB160R
200mm (800kg)	225mm	TE51UIB200S	TE51UIB200SB	TE51UIB200R

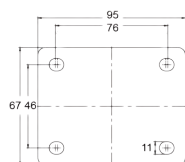


Plate Type A

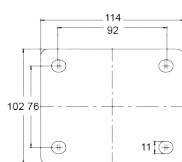


Plate Type B



## Heavy Duty Urethane

110 - 400kg Capacity

- › Urethane on cast iron wheel for strength and quiet performance
- › Fully welded metal frame ensures maximum strength and durability
- › Zinc-plated finish for corrosion resistance
- › Precision bearings deliver smooth, and reliable rolling performance

110 - 400KG CAPACITY		MOUNTING PLATE			
Wheel Dia.	Overall Height	SKU - Swivel	SKU - Swivel with Brake	SKU - Fixed Rigid	Plate Type
75mm (110kg)	106mm	TE60UOC075S	TE60UOC075SB	TE60UOC075R	A
100mm (250kg)	143mm	TE71UOC100S	TE71UOC100SB	TE71UOC100R	B
125mm (300kg)	165mm	TE71UOC125S	TE71UOC125SB	TE71UOC125R	B
150mm (350kg)	191mm	TE71UOC150S	TE71UOC150SB	TE71UOC150R	B
200mm (400kg)	241mm	TE71UOC200S	TE71UOC200SB	TE71UOC200R	B

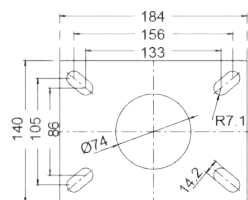


Plate Type

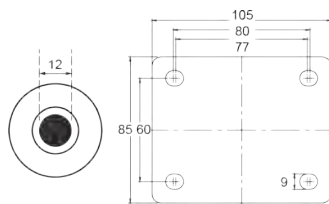


## Kingpinless Extra Heavy Duty

1000 - 1500kg Capacity

- › Kingpinless head race for enhanced stability and impact resistance
- › Fully welded metal frame ensures maximum strength and durability
- › Zinc-plated finish provides long-lasting corrosion resistance
- › Urethane on cast iron wheel with precision bearings for smooth, high-capacity rolling

1000 - 1500KG CAPACITY		MOUNTING PLATE	
Wheel Dia.	Overall Height	SKU - Swivel	SKU - Fixed Rigid
200mm (1000kg)	257mm	TE71UXB200S	TE71UXB200R
250mm (1300kg)	292mm	TE71UXB250S	TE71UXB250R
300mm (1500kg)	343mm	TE71UXB300S	TE71UXB300R



Bolt Hole Type

Plate Type



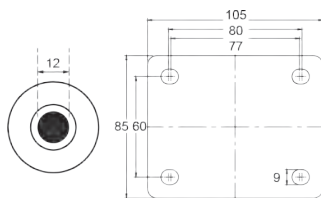
## Stainless Steel Urethane

180 - 290kg Capacity

- › Double ball race head set provides smooth and consistent swivel motion
- › Pressed stainless steel frame for strength and corrosion resistance
- › Stainless steel axle sleeve for added durability
- › High-strength nylon wheel for smooth, low-resistance movement

180 - 290KG CAPACITY		BOLT HOLE - 12MM		MOUNTING PLATE		
Wheel Dia.	Overall Height	SKU - Bolt Hole	SKU - Bolt Hole with Brake	SKU - Swivel	SKU - Swivel with Brake	SKU - Fixed Rigid
80mm (180kg)	108mm	TE22UNI080H	TE22UNI080HB	TE22UNI080S	TE22UNI080SB	TE22UNI080R
100mm (190kg)	128mm	TE22UNI100H	TE22UNI100HB	TE22UNI100S	TE22UNI100SB	TE22UNI100R
125mm (270kg)	155mm	TE22UNI125H	TE22UNI125HB	TE22UNI125S	TE22UNI125SB	TE22UNI125R





Bolt Hole Type

Plate Type



## Stainless Steel

### 180 - 290kg Capacity

- › Double ball race head set for smooth swivel motion
- › Pressed stainless steel frame for durability and corrosion resistance
- › Stainless steel axle sleeve enhances durability and load support
- › Nylon wheel offers lightweight strength and smooth, low-friction rolling
- › Perfect for cool room environments

180 - 290KG CAPACITY		BOLT HOLE - 12MM		MOUNTING PLATE		
Wheel Dia.	Overall Height	SKU - Bolt Hole	SKU - Bolt Hole with Brake	SKU - Swivel	SKU - Swivel with Brake	SKU - Fixed Rigid
80mm (180kg)	108mm	TE22NNP080H	TE22NNP080HB	TE22NNP080S	TE22NNP080SB	TE22NNP080R
100mm (190kg)	128mm	TE22NNP100H	TE22NNP100HB	TE22NNP100S	TE22NNP100SB	TE22NNP100R
125mm (270kg)	155mm	TE22NNP125H	TE22NNP125HB	TE22NNP125S	TE22NNP125SB	TE22NNP125R
160mm (290kg)	200mm	TE22NNP160H	TE22NNP160HB	TE22NNP160S	-	TE22NNP160R

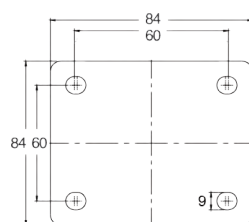


Plate Type



## Heavy Duty Low Profile

### 300 - 400kg Capacity

- › Double ball race head set for smooth swivel action
- › Fully welded frame for maximum strength and durability
- › Precision bearing ensures smooth, reliable rolling
- › Heavy-duty, low-profile nylon wheel for high load capacity in tight spaces

300 - 400KG CAPACITY		MOUNTING PLATE		
Wheel Diameter	Overall Height	SKU - Swivel	SKU - Swivel with Brake	SKU - Fixed Rigid
50mm (300kg)	79mm	TE38NZB050S	TE38NZB050SB	TE38NZB050R
75mm (400kg)	105mm	TE37NZB075S	-	TE37NZB075R



## Grey Rubber Wheel

### 205kg Capacity

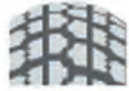
- › 200mm grey rubber wheel with a durable black polypropylene centre for versatile, long-term use
- › 82 Shore A rubber tyre offers excellent traction and added rim strength
- › Available in plain or roller bearing options to suit different requirements
- › Lightweight yet strong design ensures smooth handling and load stability indoors or outdoors
- › Ideal for carts, dollies, and utility equipment across commercial and personal applications

SKU	Load Capacity	Overall Height	Wheel Dia.	Tyre Width	Tyre Material	Rim Material
TWGR200W	205kg	200mm	200mm	50mm	Standard solid rubber grey	PP



### Semi Pneumatic - Puncture Proof Wheel 100kg Capacity

- > 100kg rated with durable steel rim and black tyre
- > 265mm diameter with 3/4" or 20mm ball bearing
- > Semi-pneumatic, puncture-proof for smooth, stable use
- > Lightweight and easy to install for carts and trolleys



SKU	Wheel Dia.	Ball Bearing
PP350X4SB20	265mm	20mm
PP350X4SB34	265mm	3/4 Inch



### Pneumatic - Steel Wheel 100kg Capacity

- > Fitted to two-piece, wobble-free steel centres for stability and durability
- > Steel centres manufactured from 1.8mm thick high-strength steel



SKU	Wheel Dia.	Bearing	8km/hr	15km/hr
TK350X4STR-SB20	200mm	20mm	100kg	70kg
TK350X4STR-SB34	250mm	3/4 Inch	100kg	70kg



### Pneumatic - Steel Wheel 200kg Capacity

- > Fitted to two-piece, wobble-free steel centres for stability and durability
- > Steel centres manufactured from 1.8mm thick high-strength steel



SKU	Wheel Dia.	Wheel Width	8km/hr	15km/hr
TK350X6KN0-SB10	320mm	80mm	200kg	180kg



### Pneumatic Rigid Wheel 120 - 160kg Capacity

- > Double ball race head set for smooth swivel performance
- > Pressed steel construction for strength and durability
- > Fitted with double ball bearings for smooth rolling under load



Plate Type

SKU	Capacity	Overall Height	Wheel Dia.
TK250X4F	120kg	257mm	220mm
TK350X4F	160kg	320mm	265mm



### Pneumatic Swivel Wheel 120 - 160kg Capacity

- > Double ball race head set for smooth swivel performance
- > Pressed steel construction for strength and durability
- > Fitted with double ball bearings for smooth rolling under load



Plate Type

SKU	Capacity	Overall Height	Wheel Dia.
TK250X4S	120kg	257mm	220mm
TK350X4S	160kg	320mm	265mm



### Pneumatic Swivel with Brake Wheel 120 - 160kg Capacity

- > Double ball race head set for smooth swivel performance
- > Pressed steel construction for strength and durability
- > Fitted with double ball bearings for smooth rolling under load



Plate Type

SKU	Capacity	Overall Height	Wheel Dia.
TK250X4SB	120kg	257mm	220mm
TK350X4SB	160kg	320mm	265mm



## Solid Black Rubber Wheel 100kg Capacity

- › Puncture-free rubber wheel for smooth, heavy-duty use
- › Lightweight yet strong polypropylene centre
- › Pressed-on rubber tyre for grip and shock absorption



SKU	Wheel Dia.	Ball Bearing
W-004	200mm	20mm
W-005	250mm	3/4 Inch



## Black Rubber Utility Wheel 150kg Capacity

- › 250mm puncture-free rubber wheel for smooth, heavy-duty use
- › Lightweight yet strong polypropylene centre
- › Pressed-on rubber tyre for grip and shock absorption
- › Choice of ball bearings (10 km/h max) or plain bushes for wet areas



SKU	Wheel Dia.	Alex
R25050C-PRYQ20	250mm	20mm
R25050C-PRYQ34	250mm	3/4 Inch



## Semi Pneumatic - Puncture Proof Wheel 50kg Capacity

- › Polyurethane foam-filled tyres offer premium semi-pneumatic performance with puncture-proof reliability
- › Fitted to two-piece, wobble-free steel centres for stability and durability
- › Steel centres manufactured from 1.8mm thick high-strength steel



SKU	Wheel Dia.	Wheel Width	8km/hr
P200X50RIB	200mm	50mm	50kg



## Semi Pneumatic - Puncture Proof Wheel 75kg Capacity

- › Polyurethane foam-filled tyres offer premium semi-pneumatic performance with puncture-proof reliability
- › Fitted to two-piece, wobble-free steel centres for stability and durability
- › Steel centres manufactured from 1.8mm thick high-strength steel



### OPTIONAL NON-MARKING GREY TYRE

Grey non-marking tyres to protect sensitive floor.

SKU	Wheel Dia.	Bearing	8km/hr	15km/hr
P250X4LUG-SB20	220mm	20mm	75kg	40kg
P250X4LUG-SB34	220mm	3/4 Inch	75kg	40kg



## Semi Pneumatic - Puncture Proof Wheel 120kg Capacity

- › Polyurethane foam-filled tyres offer premium semi-pneumatic performance with puncture-proof reliability
- › Fitted to two-piece, wobble-free steel centres for stability and durability
- › Steel centres manufactured from 1.8mm thick high-strength steel



### OPTIONAL NON-MARKING GREY TYRE

Grey non-marking tyres to protect sensitive floor.

SKU	Wheel Dia.	Wheel Width	8km/hr	15km/hr
P400X8KN0	400mm	100mm	120kg	90kg



## Pneumatic - Steel Wheel 120kg Capacity

- › Fitted to two-piece, wobble-free steel centres for stability and durability
- › Steel centres manufactured from 1.8mm thick high-strength steel



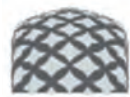
SKU	Wheel Dia.	Wheel Width	8km/hr	15km/hr
250X4LUG-SB20	220mm	50mm	120kg	100kg





### Pneumatic - Steel Wheel 140kg Capacity

- › Fitted to two-piece, wobble-free steel centres for stability and durability
- › Steel centres manufactured from 1.8mm thick high-strength steel



SKU	Wheel Dia.	Wheel Width	8km/hr	15km/hr
300X4DMD	250mm	70mm	140kg	110kg



### Pneumatic - Steel Wheel 220kg Capacity

- › Fitted to two-piece, wobble-free steel centres for stability and durability
- › Steel centres manufactured from 1.8mm thick high-strength steel



SKU	Wheel Dia.	Wheel Width	8km/hr	15km/hr
400X8KNO	400mm	100mm	220kg	200kg



### Pneumatic - Steel Wheel 230kg Capacity

- › Fitted to two-piece, wobble-free steel centres for stability and durability
- › Steel centres manufactured from 1.8mm thick high-strength steel



SKU	Wheel Dia.	Wheel Width	8km/hr	15km/hr
650X8GRA	420mm	160mm	230kg	220kg



### Pneumatic - Plastic Centre Wheel 100kg Capacity

- › Black pneumatic tyre with quality inner tube and plastic centre
- › 20mm deep groove bearing for smooth performance
- › Fitted with PP 20 cone BRG wheel for reliable support



SKU	Wheel Dia.	Bearing	Hub
250X4LUG-PWB20	220mm	20mm	60mm



### Pneumatic - Plastic Centre Wheel 100kg Capacity

- › Black pneumatic tyre with quality inner tube and plastic centre
- › Plain bearing design for simple, low-friction performance
- › Fitted with PP 05 plain BSH wheel for reliable support



SKU	Wheel Dia.
250X4LUG-PWA05	220mm



### Pneumatic - Plastic Centre Wheel 120kg Capacity

- › Black pneumatic tyre with quality inner tube and plastic centre
- › Plain bearing design for simple, low-friction performance
- › Fitted with PP 05 plain BSH wheel for reliable support



SKU	Wheel Dia.
300X4DMD-PWA05	250mm



**PFS2.5**  
**Pallet Feet**

SKU	Prod Size	Top Section
PFS2.5	135 x 135 x 2.5mm	60 x 60mm



**TSWHEELPLATE**  
**Wheel Plate**

- > Mild Steel Raw 5mm Thick
- > Pre-drilled & threaded holes for easy castor mounting

Prod Size	UNC Holes Centres	
130 x 100 x 5mm	80mm x 60mm x 5/16"	80mm x 105mm x 3/8"



**Expanding Screw**

SKU	Dimensions
TER21.5	Ø 19 - 21.5 Round Screw
TER24	Ø 21.5 - 24 Round Screw
TER27	Ø 24 - 27 Round Screw
TER30	Ø 27 - 30 Round Screw
TES21.5	Ø 19 - 21.5 Square Screw
TES24	Ø 21.5 - 24 Square Screw
TES27	Ø 24 - 27 Square Screw
TES30	Ø 27 - 30 Square Screw



**Butyl Rubber Seamless**  
**(Butt-Joined)**

SKU	Dimensions
SPTUBE250X4	Tube Pneumatic 250X4
SPTUBE300-350X4	Tube Pneumatic 300X4 or 350X4
SPTUBE250X6	Tube Pneumatic 250X6
SPTUBE350X6	Tube Pneumatic 350X6
SPTUBE500X6	Tube Pneumatic 500X6
SPTUBE400X8	Tube Pneumatic 400X8
SPTUBE650X8	Tube Pneumatic 650X8



**Insert Feet**

SKU	Specifications
S3816	M16 (Square Tube)
S3820	M20 (Square Tube)
S5016	M16 (Square Tube)
S5020	M20 (Square Tube)
S5016	M16 (Round Tube)
S5020	M20 (Round Tube)

**Adjustable Feet**

- > A multi-adjustable pedestal foot - ideal for industrial, commercial, workshop or food industry applications
- > The special insert in the base helps to absorb vibration and means your machinery will stay exactly where you put it

SKU	Spindle Size	Overall Length
AF801650	M16	50mm
AF8016100	M16	100mm
AF8016150	M16	150mm
AF8020100	M20	100mm
AF8020150	M20	150mm
AF8024150	M24	150mm
AF10016100	M16	100mm
AF10016150	M16	150mm
AF10020100	M20	100mm
AF10020150	M20	150mm
AF12520150	M20	150mm
AF12524150	M24	150mm
AFS601250	M12	50mm
AFS6012100	M12	100mm
AFS6012150	M12	150mm